



Phytochemical Study and Antidepressant Effect of Essential Oil of *Apium graveolens* L.

**Mehrdad Shahrani¹, Najmeh Asgharzadeh², Hossein Amini-Khoei³,
Zahra Mirzaeian², Ali Ahmadi⁴ and Zahra Lori Goeni^{5*}**

¹Department of Physiology, Medical Plants Research Center, Shahrekord University of Medical Sciences, Shahrekord, Iran.

²Medical Plants Research Center, Basic Health Sciences Institute, Shahrekord University of Medical Sciences, Shahrekord, Iran.

³Department of Pharmacology, Medical Plants Research Center, Shahrekord University of Medical Sciences, Shahrekord, Iran.

⁴Department of Epidemiology, Modeling in Health Research Center, Shahrekord University of Medical Sciences, Shahrekord, Iran.

⁵Department of Pharmacognosy, Medical Plants Research Center Basic Health Sciences Institute, Shahrekord University of Medical Sciences, Shahrekord, Iran.

Authors' contributions

This work was carried out in collaboration among all authors. Author MS designed the study. Author AA performed the statistical analysis and managed the analyses of the study. Author HAK wrote the protocol. Author ZLG wrote the first draft of the manuscript. Authors NA and MS managed the literature searches. Author ZM did the experiments. All authors read and approved the final manuscript.

Article Information

DOI: 10.9734/JPRI/2019/v27i430179

Editor(s):

(1) Dr. Carlos M. Contreras, Unidad Periferica Xalapa, Instituto de Investigaciones Biomedicas, UNAM, Mexico and Instituto de Neuroetologia, Universidad Veracruzana, Mexico.

(2) Dr. Jinyong Peng, Professor, College of Pharmacy, Dalian Medical University, Dalian, China.

Reviewers:

(1) Yongchun Zhu, Shenyang Normal University, China.

(2) T. E. Manyarara, University of Zimbabwe, Zimbabwe.

Complete Peer review History: <http://www.sdiarticle3.com/review-history/48632>

Original Research Article

Received 16 February 2019

Accepted 25 April 2019

Published 13 May 2019

ABSTRACT

Background and Purpose: Depression is a common and debilitating disease. The aim of this study was to investigate the chemical composition of *Apium graveolens* essential oil and its antidepressant effect in mice and the effect on motor balance, serum and brain antioxidant capacity.

*Corresponding author: E-mail: za.lori@iran.ir;

Materials and Methods: 60 mice were randomly divided into 6 groups (N=10), Control, reserpine 5mg/kg IP, reserpine + fluoxetine 20 mg/kg, reserpine + essential oil (50, 75 and 100 mg/kg). The intervention group received 5 mg/kg reserpine and 18 hours later, essential oil (50, 75 and 100 mg/kg). Assessment of depression done with forced swimming and open field tests and motor balance with a Rotarod. Serum and brain antioxidant capacity and malondialdehyde levels were measured.

Results: Reserpin increased the immobilization time in the forced swimming test, the number of motor units in the open field test, serum and brain malondialdehyde and reduced the antioxidant capacity and the motor balance. Fluoxetine and essential oil of *Apium graveolens* 50 and 75 mg/kg reduced the time of immobilization time, number of motor units, serum and brain malondialdehyde and increased serum and brain antioxidant capacity and motor balance. *Apium graveolens* essential oil 100 mg/kg increased serum antioxidant capacity and reduced number of motor units.

Conclusion: Chemical compounds of essential oil of *Apium graveolens* have antioxidant, anti-inflammatory and regulating of chemical neurotransmitters properties that are known mechanisms of depression.

Keywords: *Apium graveolens* L; reserpine; forced swimming test; depression; MDA; oxidative stress; mice.

1. INTRODUCTION

Depression is one of the major causes of ill health and economic burden worldwide. Antidepressant medication is a standard treatment and the first choice for depressed patients in current psychiatric guidelines [1].

Depression is a primary determinant of years lost due to disability accounting for 24.5% of all disability-adjusted life years due to mental and neurological disorders. Prevalence of lifetime depression ranges from 7.6 to 16.6% across countries and the economic burden has been estimated in 210 billion dollars per year in the USA only [2].

Over the past few decades, depression has become one of the most common neuropsychiatric disorders, affecting the quality of life of millions of people worldwide [3].

The pathophysiology of depression has not been fully elucidated; increasing evidence has shown that neuro inflammation may play a role in the development of this disorder. Specifically, it has been reported that patients with depression frequently show immune system alterations, such as elevated proinflammatory cytokines levels in plasma and cerebrospinal fluid [4]. Disturbance of affective cognition constitutes a core aspect of the symptomatology of many psychiatric disorders, particularly depression and anxiety. These cognitive dysfunctions represent one of the main features of depressive disorders, of which the number of patients is increasing globally [5].

According to the World Health Organization, Major Depressive Disorder also carries the heaviest burden of disability among mental and behavioral disorders [6]. The generation of excessive free radicals due to oxidative stress and subsequently defective antioxidant defense along with enhanced lipid peroxidation are implicated in depressive disorders. In addition, impaired hypothalamic-pituitary adrenal axis (HPA-axis) is known to participate in the induction of depressive like behavior. The disproportionate elevation of serum corticosterone level in response to impaired HPA axis is responsible for neuronal damage which is manifested to hippocampal atrophy in depressed patients [7].

Reserpine is a sympatholytic and sedative agent and was once used as a primary treatment for hypertension. However, evidence in research and clinical trials have shown that Reserpine has a serious side-effect, causing major depression after chronic use of the medication in a percentage of the drug's users. Reserpine-mediated depression is thought to be caused by the depletion of monoamines in the brain, such as the catecholamine's adrenaline, dopamine, and nor epinephrine. This is referred to the monoamine theory of depression. The mechanism of Reserpine is the irreversible binding to storage vesicles in monoaminergic neurons. The gathered evidence indicating Reserpine causes depression has led to the usage of the medication in animals, most commonly mice and rats, to produce a practical animal model for depression [20].

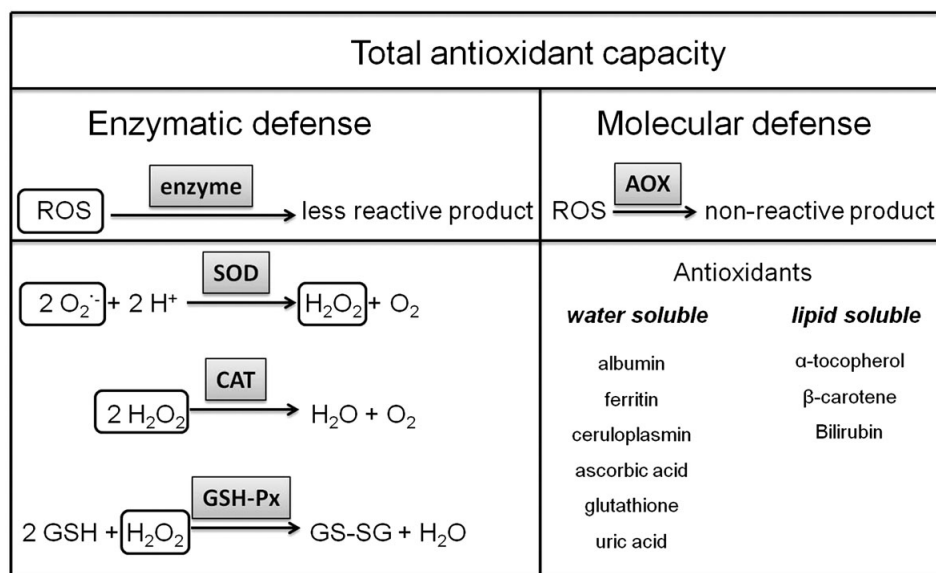


Fig. 1. Overview of the oxidative defense mechanism in human blood and tissues. AOX, antioxidant; GSH-Px, glutathione peroxidase; CAT, catalase; SOD, superoxide dismutase; ROS, reactive oxygen species

Lipid peroxidation is associated with depression and a variety of chronic health diseases, such as cancer and atherosclerosis numerous studies suggest that antioxidants can prevent the oxidation of various macromolecules, such as DNA, proteins, and lipids, thus preventing the depression, aging process and increasing the lifespan of the organism [8]. In this study, we investigated one type of antioxidants *Apium graveolens*. Oxidative stress occurs when there is an imbalance in oxidant and antioxidant in excess of oxidant [9]. Free radicals, because of their nature of attack on cellular organelles behave like oxidants. The attack of free radical on polyunsaturated membrane lipid gives hydroperoxide with subsequent production of malondialdehyde (MDA). This attack on membrane lipid is termed as lipid peroxidation, and malondialdehyde is now measured as the product of free radical injury on membrane lipid. The attack of free radical on polyunsaturated membrane lipid results in hydroperoxide with subsequent production of malondialdehyde (MDA) [10]. The oxidative defense mechanism is shown in Fig. 1 [11].

Apium graveolens is classified as a member of the Apiaceae family known as celery. It is a well-known plant used consistently throughout history in medicinal preparations, food flavoring or in spices. The whole part of this plant has a specific taste and aromatic smell, especially the leaves

and roots [5]. Medicinal and aromatic substances are presented in the roots, stem and leaves. Reports in literature reviews have claimed to show that *A. graveolens* extracts have healing properties and their active compounds possess a wide range of biological activities including anti-inflammatory activity, anti-oxidative activity, enhanced memory, and neuroprotective effects mostly found in vitro models. In addition *A. graveolens* seed has been found to help regulate the nervous system. Despite the numerous scientifically proven pharmacological activities of *A. graveolens*, there are no scientific data on its potential as an antidepressant agent. Hence, this study was initiated to determine the potential effect of essential oil of *A. graveolens* on depression and antioxidant capacity in mice.

2. MATERIALS AND METHODS

2.1 Essential Extraction

The Clevenger device works by distilling water for hydrodistillation method extraction. The powdered plant was weighed by an analytical balance and transferred to the Clevenger attached balloon. Distilled water was added to the balloons containing *A. graveolens* powder and extracted for 4 hours. Then the essential oil was collected and added sodium sulfate without water and stored at -20°C until GC-MS was injected [12].

2.2 Determination of Chemical Composition of Essential Oil by GC-MS

The GC-MS is a device that removes chemical mixtures by gas chromatography and mass spectrometry, and we used it to determine the essential oil composition.

2.3 Animals

60 Adult Balb/c mice (6-7 weeks old, weighing 18-22 g) were purchased from the Experimental Animal Centre of Tehran. The mice allowed to acclimatize for 1 week in an environment with a controlled temperature (25-27°C), and 12 h light/dark cycle, and were given free access to food and water. The animal protocols for this study were approved by the Shahrekord University of Medical sciences Animal Care Committee according to the Guidelines on the Humane Treatment of Laboratory Animals.

The groups were divided as follows (N=10): Control (Do not get any medication or negative control), reserpine 5 mg/kg IP, reserpine + fluoxetine 20 mg/kg (positive control), reserpine + essential oil (50, 75 and 100 mg/kg). The intervention group received 5 mg/kg reserpine and 18 hours later, essential oil (50, 75 and 100 mg/kg).

2.4 Rotarod Test

Locomotor activity of mice was assessed using a Rotarod system (borjsanat company, Iran). Before measuring, mice were adapted to the rod with a constant speed of 4 rpm for 3 minutes. Mice were conditioned on the rod (diameter: 3.5 cm) with an increasing speed of 4 to 40 rpm (accelerated by 1 rpm per 5 s). Motor ability was measured as the time until the mouse falls off the rod, up to 300 s. The average latency time of 3 trials was calculated for statistical analyses. The interval period between trials was 20 min [13].

2.5 Open Field Test (OFT)

The open-field apparatus was a square, Plexiglas, arena measuring 60 cm _ 60 cm _ 40 cm. To start a session, mice were gently placed in the center of the open-field and were allowed to freely explore the whole arena. Mice were allowed to habituate to the open-field arena for 2

min to eliminate the bias of novelty. This test was used to evaluate the motor activity of the mouse. The floor area of this box was divided into 16 squared houses of equal size, and within 5 minutes, when four limbs of rats in one squared houses were counted as a one unit of movement.

2.6 Forced Swimming Test (FST)

In FST, we assessed the ability of mice to cope with an inescapable stressful situation, which reflects depressive-like behavior. Mice were individually placed in a 2 L Pyrex beaker (13 cm diameter, 24 cm height), filled with 23°C water with a depth of 17 cm. All mice were forced to swim for 6 min, and the duration of immobility was measured during the final 5 min of the test. The immobility was defined as the time that the mouse spent floating without struggling and making only the movements necessary to keep its head above the water level. The observers were blinded to the groups. The time spent immobile was measured and compared by two observers to minimize the bias [13].

2.7 Assay of Plasma and Brain MDA Levels

Malondialdehyde (MDA) was estimated using method of Sikar et al. it is a thiobarbituric acid reacting substance. After the initial precipitation by trichloroacetic acid (TCA), the reaction of MDA with thiobarbituric acid gives a red colored complex. Thiobarbituric acid (TBA) reacts with lipoperoxidation aldehydes, such as MDA, as the most common method to assess lipid peroxidation in biological samples. Briefly, 0.5 mL of plasma or brain homogenate was added to a reaction mixture (1.0 mL) formed by equal parts of 15% trichloroacetic acid, 0.25 N HCl and 0.375% TBA, plus 2.5 mM butylated hydroxytoluene (BHT) and 0.1 mL of 8.1% sodium dodecyl sulphate (SDS), followed by 30 min heating at 95°C; the pH value of the analytical reaction mixture was about 0.9. After cooling, the chromogen was extracted with N-butanol and read spectrophotometrically at 532 nm against reaction mixture blank lacking plasma but subjected to the entire procedure and extracted with n-butanol. The results were expressed as mol/L in plasma and nmol/gr in wet tissue according to a standard, which was prepared with serial dilutions of standard 1,1,3,3 tetramethoxypropane [14].

2.8 Measurement of Total Antioxidant Capacity (TAC)

The ferric reducing antioxidant power (FRAP assay) is a method to determine TAC (total antioxidant capacity). According to this method, a blue ferrous complex is formed by reduction of colorful ferric-tripyridyltriazine complex in the presence of antioxidant. The absorbance of samples was determined at a wavelength of 593 nm. After comparing the absorbance of each sample to the standard curve, the quantity of antioxidant power was calculated and the TAC has reported in $\mu\text{mol/L}$ [15].

2.9 Data Analysis Method

Graphpad PRISM software version 6 was used to plot the graphs. One way ANOVA was used to determine the significant difference and Tukey's post hoc test was used for comparison of the means. $P < 0.05$ was considered statistically significant.

3. RESULTS

3.1 Chemical Composition of Essential Oil of *Apium graveolens* by GC-MS

Analysis identified 19 components in the *Apium graveolens* essential oil. The main components of essential oil composition were α -Terpinyl acetate (29.5%), limonene (19.7%), Neocnidilide

(19.2%), γ -Terpinene (9.1%), Myristicin (6%) and (Z)-Ligustilide (4%) as shown in Fig. 2.

3.2 The Effect of *Apium graveolens* Essential Oil on the Duration of the Balance

Analysis of One Way Anova showed that the duration of balance in the reserpine group was significantly reduced compared to the control group ($P < 0.001$). The duration of balance in 75 and 100 mg / kg groups of essential oil was significantly increased compared to the reserpine group ($P < 0.01$). The duration of balance in the reserpine + fluoxetine group increased significantly compared to the reserpine group ($P < 0.01$) (Fig. 3).

3.3 The Effect of *Apium graveolens* Essential Oil on the Number of Unit Movements

Analysis of One Way Anova showed that the number of motor units in the reserpine group was significantly decreased compared with the control group ($P < 0.01$). The number of motor units in groups 75 and 100 mg / kg of essential oil was significantly higher than the reserpine group ($P < 0.001$). The number of motor units in the reserpine + fluoxetine group increased significantly compared to the reserpine group ($P < 0.05$) (Fig. 4).

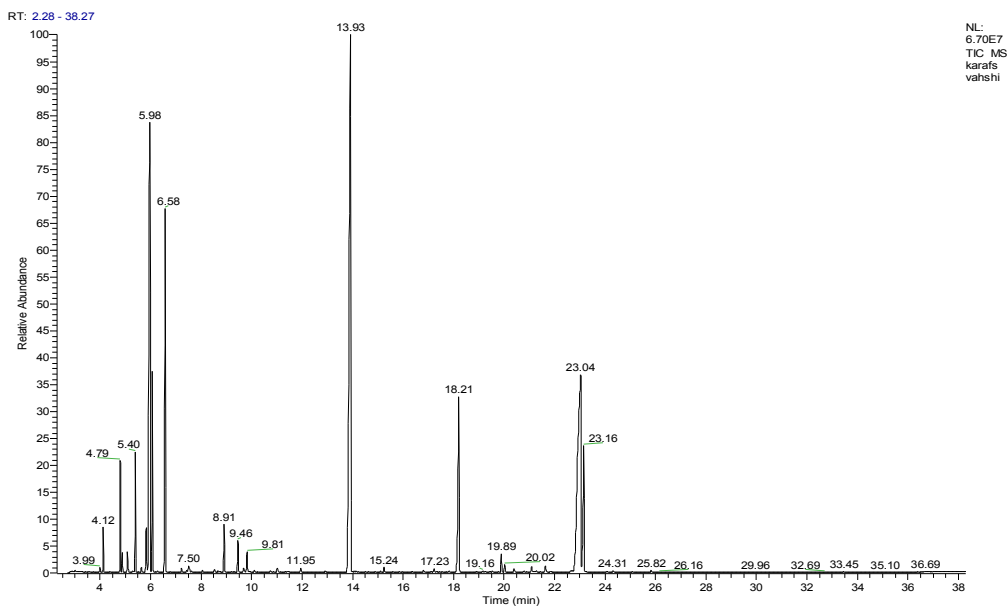


Fig. 2. GC /MS chromatogram from *Apium graveolens* essential oil

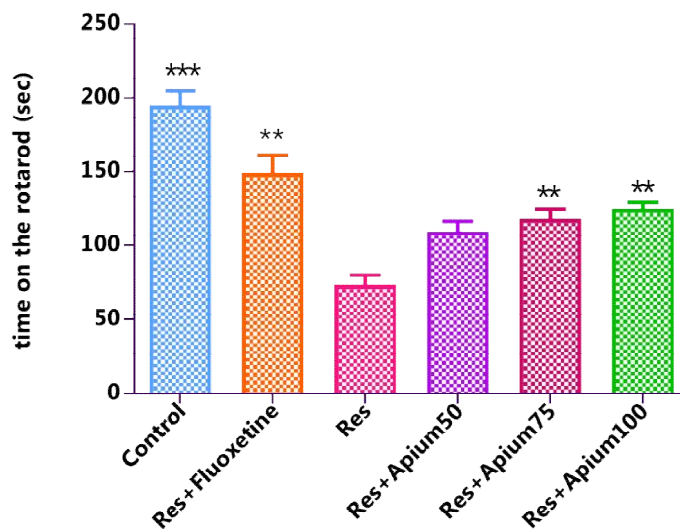


Fig. 3. Duration of balance in rotarod test. Res = Reserpine, Apium = *Apium graveolens*
 *** and ** Comparison with Reserpine $P < 0.001$, $p < 0.01$

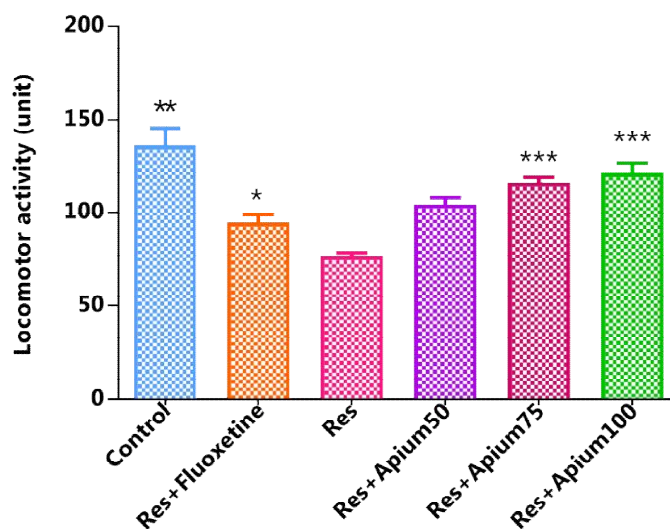


Fig. 4. Locomotor activity in open field test. Res = Reserpine, Apium = *Apium graveolens*
 *** comparison with reserpine $p < 0.001$; ** comparison with reserpine $p < 0.01$ * comparison with reserpine $p < 0.05$

3.4 Effect of *Apium graveolens* Essential Oil on the Immobility Time in the Swimming Test

Analysis of One Way Anova showed that, the immobility time was significantly increased in the reserpine group compared to the control group ($P < 0.001$). The duration of immobility in 75 and 100 mg / kg essential oil was significantly lower than the reserpine group ($P < 0.05$). The duration of immobilization in the reserpine + fluoxetine group was significantly lower than that of the reserpine group ($P < 0.05$) (Fig. 5).

3.5 Effect of *Apium graveolens* Essential Oil on Serum Antioxidant Capacity

Analysis of One Way Anova showed that serum antioxidant capacity decreased significantly in reserpine group compared to control group ($P < 0.001$). Serum antioxidant capacity in the groups 50, 75 and 100 mg / kg essential oil and reserpine + fluoxetine was significantly increased compared to the reserpine group ($P < 0.001$) (Fig. 6).

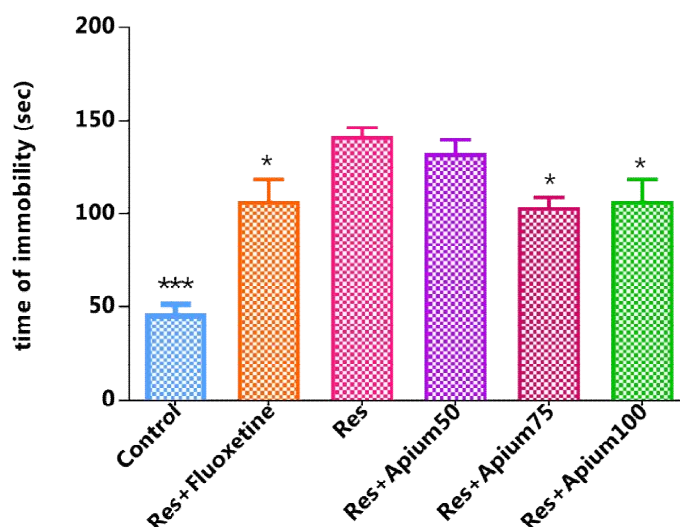


Fig. 5. Duration of immobilization in the forced swimming test. Res = Reserpine, Apium = *Apium graveolens*

*** comparison with all other groups $p < 0.001$; * comparison with reserpine $p < 0.05$

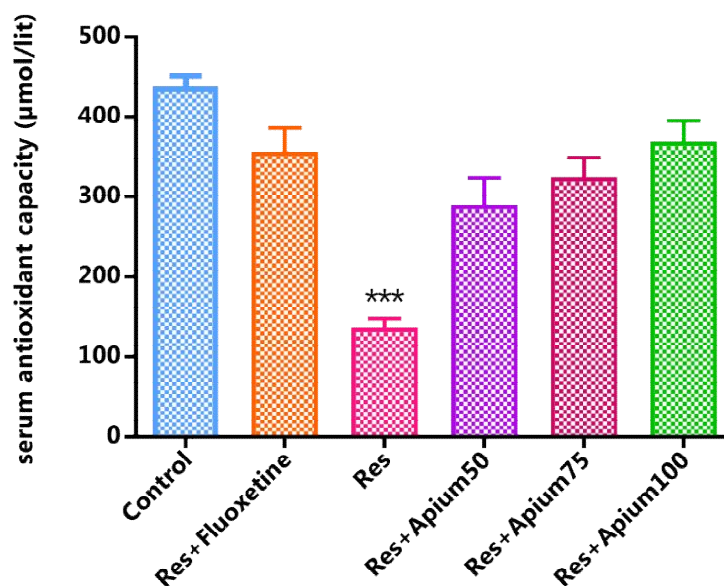


Fig. 6. Serum antioxidant capacity Res = Reserpine, Apium = *Apium graveolens*

*** comparison all other groups $p < 0.001$

3.6 Effect of *Apium graveolens* Essential Oil on Serum Malondialdehyde

Analysis of One Way Anova showed that serum malondialdehyde increased significantly in the reserpine group compared with the control group ($P < 0.01$). Serum malondialdehyde was significantly decreased in groups 75 and 100 mg / kg essential oil and reserpine + fluoxetine compared to the reserpine group ($P < 0.05$) (Fig. 7).

3.7 The Effect of *Apium graveolens* Essential Oil on the Antioxidant Capacity of the Brain

Analysis of One Way Anova showed that the antioxidant capacity of the brain in the reserpine group, was significantly reduced compared with the control, 75 and 100 mg / kg essential oil and reserpine + fluoxetine groups ($P < 0.001$, $P < 0.01$, $P < 0.05$) (Fig. 8).

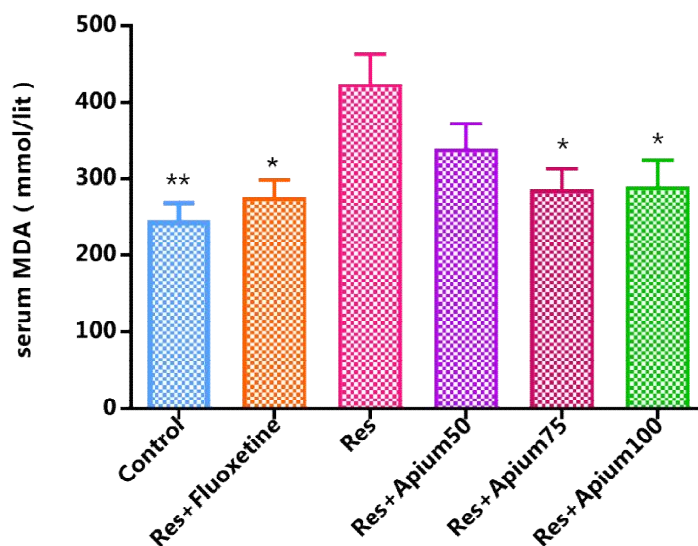


Fig. 7. Serum malondialdehyde Res = Reserpine, Apium = *Apium graveolens*
 ** and * comparison with reserpine $p < 0.01$, $p < 0.05$

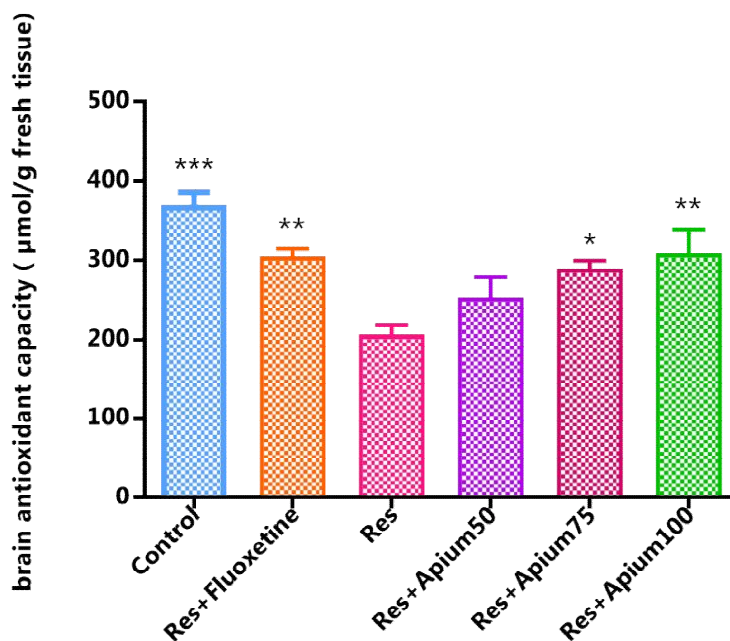


Fig. 8. Antioxidant capacity of the brain Res = Reserpine, Apium = *Apium graveolens*
 ***, ** and * comparison with reserpine $p < 0.001$, $p < 0.01$, $p < 0.05$

3.8 Effect of *Apium graveolens* Essential Oil on the Level of Malondialdehyde in the Brain

Analysis of One Way Anova showed that the level of malondialdehyde in the brain in reserpine

group, was significantly increased compared to the control and 100 mg / kg essential oil groups ($P < 0.001$). The level of malondialdehyde in the 75 mg / kg essential oil and reserpine + fluoxetine groups was significantly lower than the reserpine group ($P < 0.01$, $P < 0.05$) (Fig. 9).

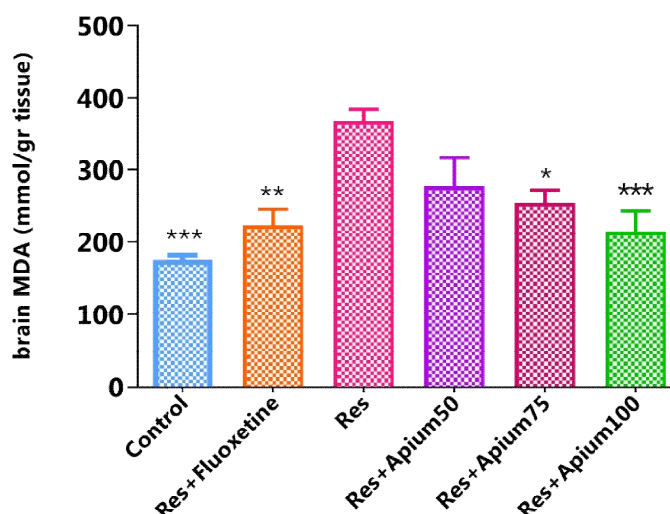


Fig. 9. Brain malondialdehyde Res = Reserpine, Apium = *Apium graveolens*

***, ** and *comarison with Res. $p < 0.001$, $p < 0.01$ and $p < 0.05$

4. CONCLUSION

Oxidative stress has been hypothesized to play a role in the pathophysiology of depression and anxiety disorders and has previously been demonstrated to be increased in subjects with these disorders [16].

As oxidative stress is closely linked to the immuno-inflammatory system, the finding that oxidative stress markers are influenced by antidepressant use is in line with reports of the anti-inflammatory effects of antidepressant treatment, [17].

In the present study, reserpine injection induced depression behaviors and significantly increased the duration of immobilization in forced swimming test and decreased number of motor units in open field test compared to control group. Reserpine induces depression by depletion of monoamine transmitters [18-20]. Reducing levels of inflammatory factors and oxidative and nitrate parameters also contribute to depression by reserpine [21]. In the present study, intra peritoneal injection of fluoxetine reduced the duration of immobilization and increased the number of motor units compared to the reserpine group.

In a study by Lingling et al., administration of 20 mg / kg fluoxetine to mice reduced the duration of immobilization and increased motor activity. Fluoxetine significantly increased norepinephrine in the prefrontal cortex and

serotonin in the mouse hippocampus, but did not change the level of dopamine in the mouse brain [22].

Fluoxetine reduced depression has been reported to significantly increase the activity of serum antioxidant enzymes and non-enzymatic antioxidants in the brain [23]. The main mechanism of its effect is the selective retention of Serotonin reuptake in synaptic space. However, in higher concentrations, Fluoxetine can also inhibit norepinephrine and dopamine reabsorption [24]. In forced swimming and open field test *Apium graveolens* (75 and 100 mg / kg) showed anti-depressant effect.

Oxidative stress is one of the mechanisms associated with depression [25]. Increasing the production of free radicals and lipid peroxidation leads to oxidative stress due to the disruption of the enzyme and non-enzymatic antioxidant system [26,27]. Studies have shown that antioxidant compounds reduce the symptoms of depression in affected individuals [28]. Therefore, the results indicate that antioxidants have a special place in the treatment of depression. Among the potential sources of antioxidants, plants can be mentioned.

Previous studies confirmed the role of plants as antioxidants in serum and brain levels in the treatment of depression [29].

Various studies have examined the effects of the major chemical compounds of essential oil of

Apium graveolens such as limonene, α -Terpinyl acetate, γ -Terpinene, Myristicin and (Z) -Ligustilide, as well as many non-essential compounds such as β -pinene, β -thujene, α -pinene, p-cymene, α -terpineol, linalol sabinene and β -Myrcene [30,31].

On the other hand, in this study, reserpine significantly reduced the serum and brain antioxidant capacity of rats. Also, fluoxetine and *Apium graveolens* significantly increased the antioxidant capacity of serum and brain of rats.

Malondialdehyde is one of the final products of peroxidation of unsaturated fatty acids in the cell. Increasing the production of free radicals increases the production of malondialdehyde as a marker of oxidative stress [32]. In this study reserpine significantly increased malondialdehyde in serum and brain of rats. Fluoxetine and *Apium graveolens* reduced it. Other studies also showed that people with depression have lower serum antioxidant capacity and have higher levels of malondialdehyde than healthy subjects [25].

The precise mechanisms through which antidepressants could exert anti-inflammatory and antioxidant action are not fully understood. There are a number of possible pathways through which antidepressants might reduce oxidative damage. Antidepressants may replenish and/or reactivate antioxidants levels, increased mRNA levels of antioxidant enzymes, such as superoxide dismutase, have been demonstrated after antidepressant treatment [17].

As the next mechanism of depression, people with depression have higher levels of inflammatory factors such as IL-6 and tumor necrosis factor alpha compared with healthy subjects. Studies have shown the anti-inflammatory effect of some of the chemical compounds found in essential oil of *Apium graveolens* such as limonene, γ -Terpinene, Myristicin and (Z) -Ligustilide that can reduce levels of inflammatory cytokines in the body [33-35] On the other hand, decreased monoamine function including serotonin, norepinephrine and dopamine cause depression [22,36]. Study on lemon oil showed that the main chemical compounds of lemon essential oil are limonene and γ -terpinene, which have a strong effect on the release of monoamines from brain tissue [37].

A relative weakness of present study is the absence of a group receiving only fluoxetine, therefore results only may be compared with the combination of fluoxetine and reserpine. In conclusion, reserpine produced despair-like actions and motoric alterations in mice. High concentrations of essential oil of "*Apium graveolens*" although did not produce a clear antidepressant action, effectively reduced the actions of reserpine in a similar manner than the antidepressant drug fluoxetine in both, behavioral and chemical indicators.

CONSENT

It is not applicable.

ETHICAL APPROVAL

The ethical code is IR.SKUMS.REC.1395.319.

COMPETING INTERESTS

Authors have declared that no competing interests exist.

REFERENCES

1. Hakiminya B, Parnian L. Examining the relation between life style and general mental health. *Journal of Humanities Insights*. 2018;02(02):60-66.
2. Fattori A, et al. Depression severity and concentration difficulties are independently associated with HRQOL in patients with unipolar depressive disorders. *Qual Life Res*. 2017;26(9):2459-2469.
3. Hosseini A, Jalali M. The possible biological effects of long-term stress on depression. *Medbiotech Journal*. 2018; 02(04):252-255.
4. Souza LC, et al. Activation of brain indoleamine-2,3-dioxygenase contributes to depressive-like behavior induced by an intracerebroventricular injection of streptozotocin in mice. *Neurochem Res*. 2017;42(10):2982-2995.
5. Boonruamkaew P, et al. *Apium graveolens* extract influences mood and cognition in healthy mice. *J Nat Med*. 2017;71(3):492-505.
6. Oveisi K, Esmaeilimotlagh M, Alizadeh F, Asadollahi Kheirabadi M. To study the prevalence of post-traumatic stress disorder and its comorbidity with personality disorders among veterans of

- Tehran. Journal of Humanities Insights. 2018;02(01):6-13.
7. Thakare VN, Dhakane VD, Patel BM. Attenuation of acute restraint stress-induced depressive like behavior and hippocampal alterations with protocatechuic acid treatment in mice. *Metab Brain Dis.* 2017;32(2):401-413.
 8. Aliahmat NS, et al. Antioxidant enzyme activity and malondialdehyde levels can be modulated by Piper betle, tocotrienol rich fraction and *Chlorella vulgaris* in aging C57BL/6 mice. *Clinics (Sao Paulo).* 2012; 67(12):1447-54.
 9. Rafsanjani FN, et al. Marjoram increases basal gastric acid and pepsin secretions in rat. *Phytother Res.* 2007;21(11):1036-8.
 10. Atiba AS, et al. Plasma malondialdehyde (MDA): An indication of liver damage in women with pre-eclamsia. *Ethiop J Health Sci.* 2016;26(5):479-486.
 11. Walker J, et al. Total antioxidant capacity is significantly lower in cocaine-dependent and methamphetamine-dependent patients relative to normal controls: Results from a preliminary study. *Hum Psychopharmacol.* 2014;29(6):537-43.
 12. Hritcu L, Cioanca O. Prevalence of use of herbal medicines and complementary and alternative medicine in Europe. In *Herbal Medicine in Depression*, Springer. 2016; 135-181.
 13. Park HS, et al. Chronic high dose of captopril induces depressive-like behaviors in mice: possible mechanism of regulatory T cell in depression. *Oncotarget.* 2017; 8(42):72528-72543.
 14. Sikar Akturk A, et al. Nitric oxide and malondialdehyde levels in plasma and tissue of psoriasis patients. *J Eur Acad Dermatol Venereol.* 2012;26(7): 833-7.
 15. Moslemnezhad A, Mahjoub S, Moghadasi M. Altered plasma marker of oxidative DNA damage and total antioxidant capacity in patients with Alzheimer's disease. *Caspian J Intern Med.* 2016;7(2): 88-92.
 16. Palta P, et al. Depression and oxidative stress: Results from a meta-analysis of observational studies. *Psychosom Med.* 2014;76(1):12-9.
 17. Black CN, et al. Oxidative stress in major depressive and anxiety disorders, and the association with antidepressant use; results from a large adult cohort. *Psychol Med.* 2017;47(5):936-948.
 18. Rabiei Z, Gholami M, Rafeian-Kopaei M. Antidepressant effects of *Mentha pulegium* in mice. *Bangladesh Journal of Pharmacology.* 2016;11(3):711-715.
 19. Khakpour S, Khosravi M, Masoompour AS. Antidepressant effect of red ginseng hydro-alcoholic extract by forced swimming and tail suspension tests in female mice; 2009.
 20. Farzin D. Evaluation of anti-depressant activities of Harmene, Norharmene and Harmine in mice. *Journal of Gorgan University of Medical Sciences.* 2004;6(2): 1-9.
 21. Machado DG, et al. Antidepressant-like effect of the extract of *Rosmarinus officinalis* in mice: Involvement of the monoaminergic system. *Progress in Neuro-Psychopharmacology and Biological Psychiatry.* 2009;33(4):642-650.
 22. Ding L, et al. The functional study of a Chinese herbal compounded antidepressant medicine fan capsule on chronic unpredictable mild stress mouse model. *PLoS One.* 2015;10(7):e0133405.
 23. Zafir A, Banu N. Antioxidant potential of fluoxetine in comparison to *Curcuma longa* in restraint-stressed rats. *European Journal of Pharmacology.* 2007;572(1):23-31.
 24. Richelson E. *Pharmacology of antidepressants--characteristics of the ideal drug.* Mayo Clinic Proceedings. Elsevier; 1994.
 25. Maes M, et al. A review on the oxidative and nitrosative stress (O&NS) pathways in major depression and their possible contribution to the (neuro) degenerative processes in that illness. *Progress in Neuro-Psychopharmacology and Biological Psychiatry.* 2011;35(3):676-692.
 26. Nasri H, et al. Antioxidant plants and diabetes mellitus. *J Res Med Sci.* 2015;20(5):491-502.
 27. Sivajothi V, et al. Antihyperglycemic, antihyperlipidemic and antioxidant effect of *Phyllanthus rheedii* on streptozotocin induced diabetic rats. *Iranian Journal of Pharmaceutical Research.* 2008;53-59.
 28. Arora V, et al. Curcumin ameliorates reserpine-induced "depression dyad: Behavioural, biochemical, neurochemical and molecular evidences. *Psychoneuroendocrinology.* 2011;36(10): 1570-1581.
 29. Cordero MD, et al. Acute oxidant damage promoted on cancer cells by amitriptyline in comparison with some common

- chemotherapeutic drugs. *Anti-cancer Drugs*. 2010;21(10):932-944.
30. Quiroga PR, Asensio CM, Nepote V. Antioxidant effects of the monoterpenes carvacrol, thymol and sabinene hydrate on chemical and sensory stability of roasted sunflower seeds. *Journal of the Science of Food and Agriculture*. 2015;95(3):471-479.
31. Baschieri A, et al. Explaining the antioxidant activity of some common non-phenolic components of essential oils. *Food Chemistry*. 2017;232:656-663.
32. Agarwal A, Saleh RA, Bedaiwy MA. Role of reactive oxygen species in the pathophysiology of human reproduction. *Fertility and Sterility*. 2003;79(4):829-843.
33. Lee JY, Park W. Anti-inflammatory effect of myristicin on RAW 264.7 macrophages stimulated with polyinosinic-polycytidylic acid. *Molecules*. 2011;16(8):7132-7142.
34. Chao WW, Lin BF. Bioactivities of major constituents isolated from *Angelica sinensis* (Danggui). *Chinese Medicine*. 2011;6(1):29.
35. De Oliveira Ramalho TR, et al. Gamma-terpinene modulates acute inflammatory response in mice. *Planta Medica*. 2015; 81(14):1248-1254.
36. Ding L, et al. The functional study of a Chinese herbal compounded antidepressant medicine fan capsule on chronic unpredictable mild stress mouse model. *PLoS One*. 2015;10(7): e0133405.
37. Eissazadeh S, Piryaei M, Mostafavi SM. Measurement of some amino acid using biosensors based on silicon-based carbon nanotubes. *Journal of Computational and Theoretical Nanoscience*. 2019;16(1): 165–167.

© 2019 Shahrani et al.; This is an Open Access article distributed under the terms of the Creative Commons Attribution License (<http://creativecommons.org/licenses/by/4.0>), which permits unrestricted use, distribution, and reproduction in any medium, provided the original work is properly cited.

Peer-review history:

The peer review history for this paper can be accessed here:
<http://www.sdiarticle3.com/review-history/48632>